

Paul Wever Construction Equipment Co., Inc.

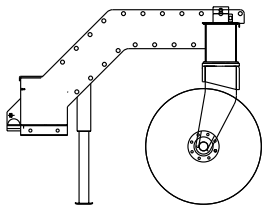
P.O. Box 85 401 Martin Drive
Goodfield, IL 61742-0085

Phone (309) 965-2005 Fax (309) 965-2905
1-800-990-PWCE Internet: www.pwce.com

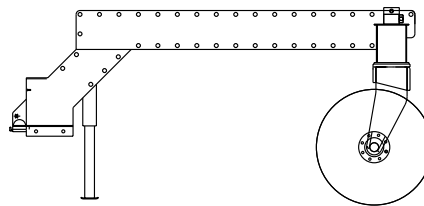
Construction-Carry-All

Parts Manual

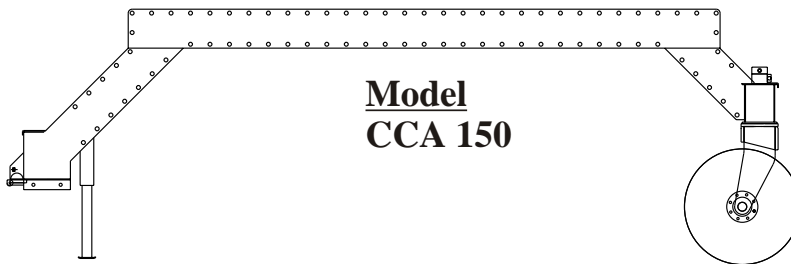
March 2004



**Model
CCA 100**

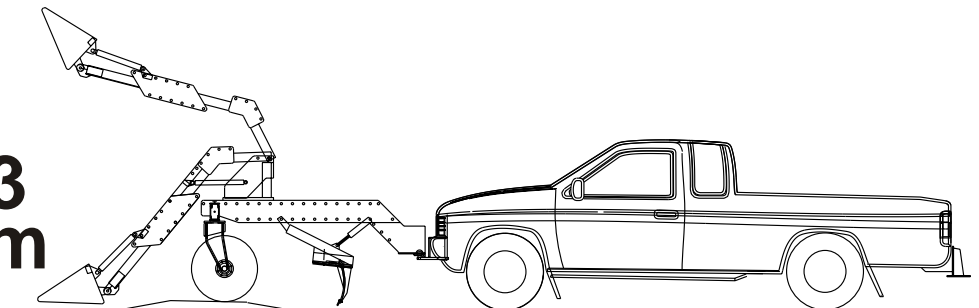


**Model
CCA 125**



**Model
CCA 150**

PWCE
Goodfield, IL
1-800-990-7923
www.pwce.com



To CCA Owners and Operators:

Let us congratulate you on your purchase of a Construction-Carry-All from Paul Wever Construction Equipment. This product is an innovative attachment that will give you greater versatility and productivity.

CCA operation requires extreme attention to safety. We at Paul Wever Construction Equipment have prepared this manual to help you safely install and operate your new extension. Read and follow this manual carefully. Also read and follow the manuals supplied by your vehicle manufacturer.

While using this manual, if you have questions, call Paul Wever Construction Equipment at (309) 965-2005. Our business hours are 8:30am to 4:30pm Central Time Zone.

Paul Wever Construction Equipment is dedicated to product support for the construction industry. If you have any need for troubleshooting, engineering services, or product support, please give us a chance to economically solve your problem. Put our knowledge to work for you. You won't be disappointed.

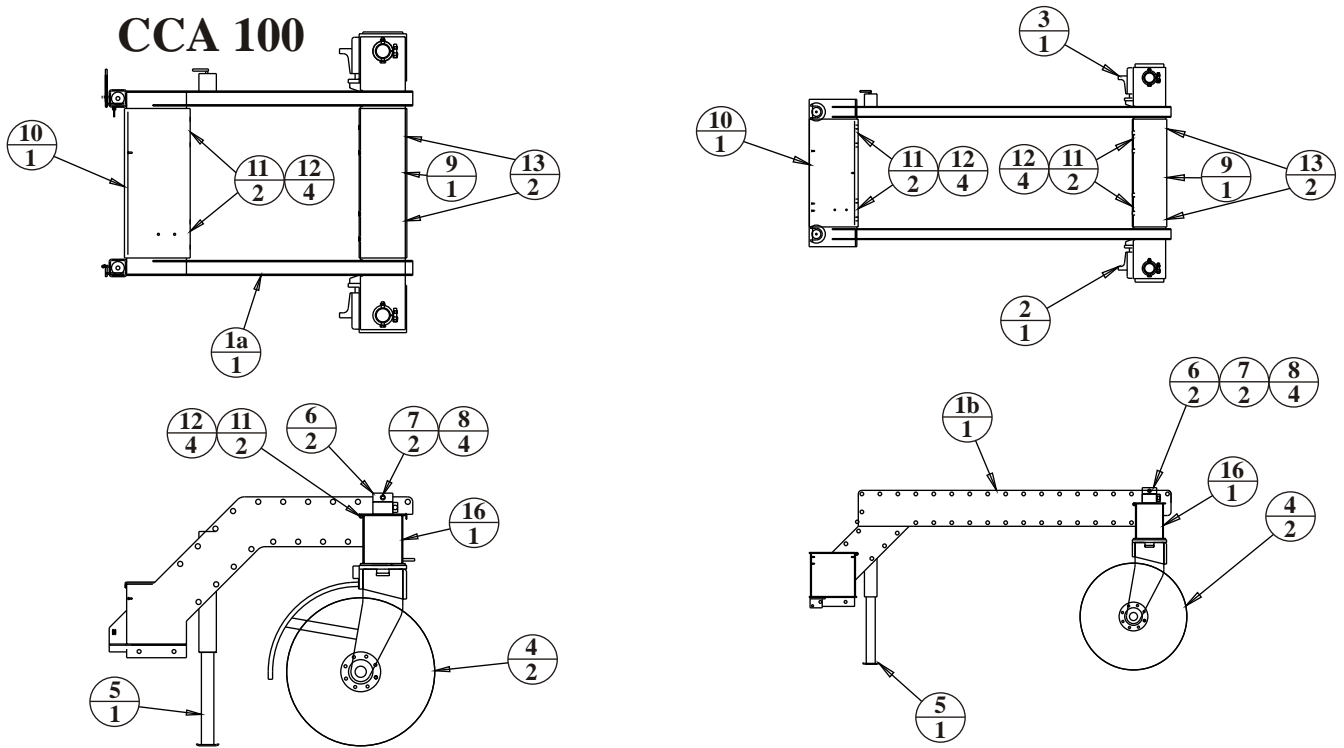
www.pwce.com

Table of Contents

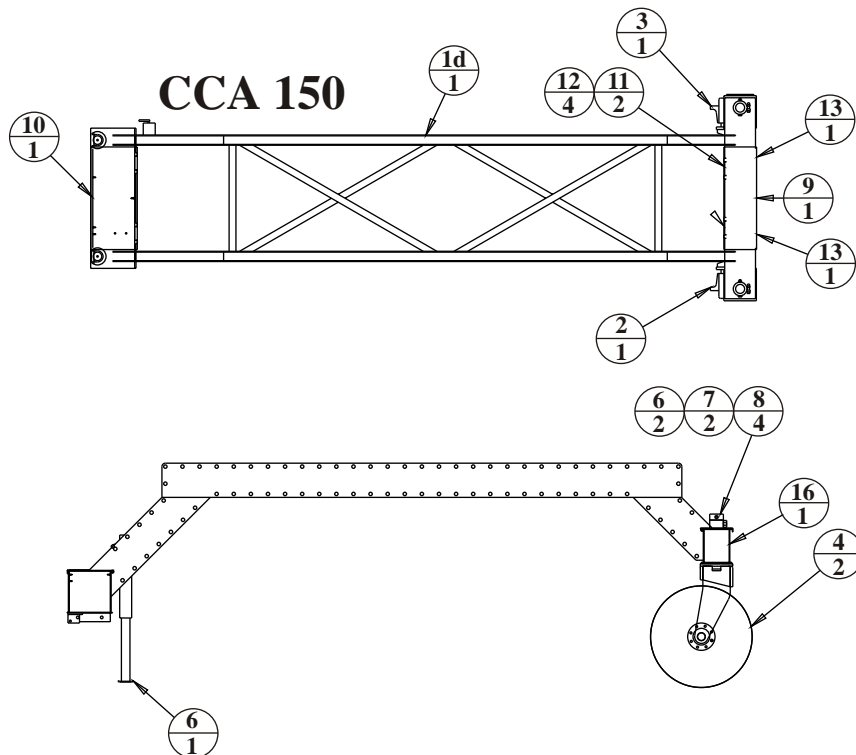
General Parts List	-	-	-	-	-	1
Dump Box-	-	-	-	-	-	3
7-Blade Grader	-	-	-	-	-	4
3-Point Hitches	-	-	-	-	-	5
Quick-Tach System	-	-	-	-	-	6
Additional Options	-	-	-	-	-	7
Warranty	-	-	-	-	-	8
Notes	-	-	-	-	-	9

General Wear Parts

CCA 100



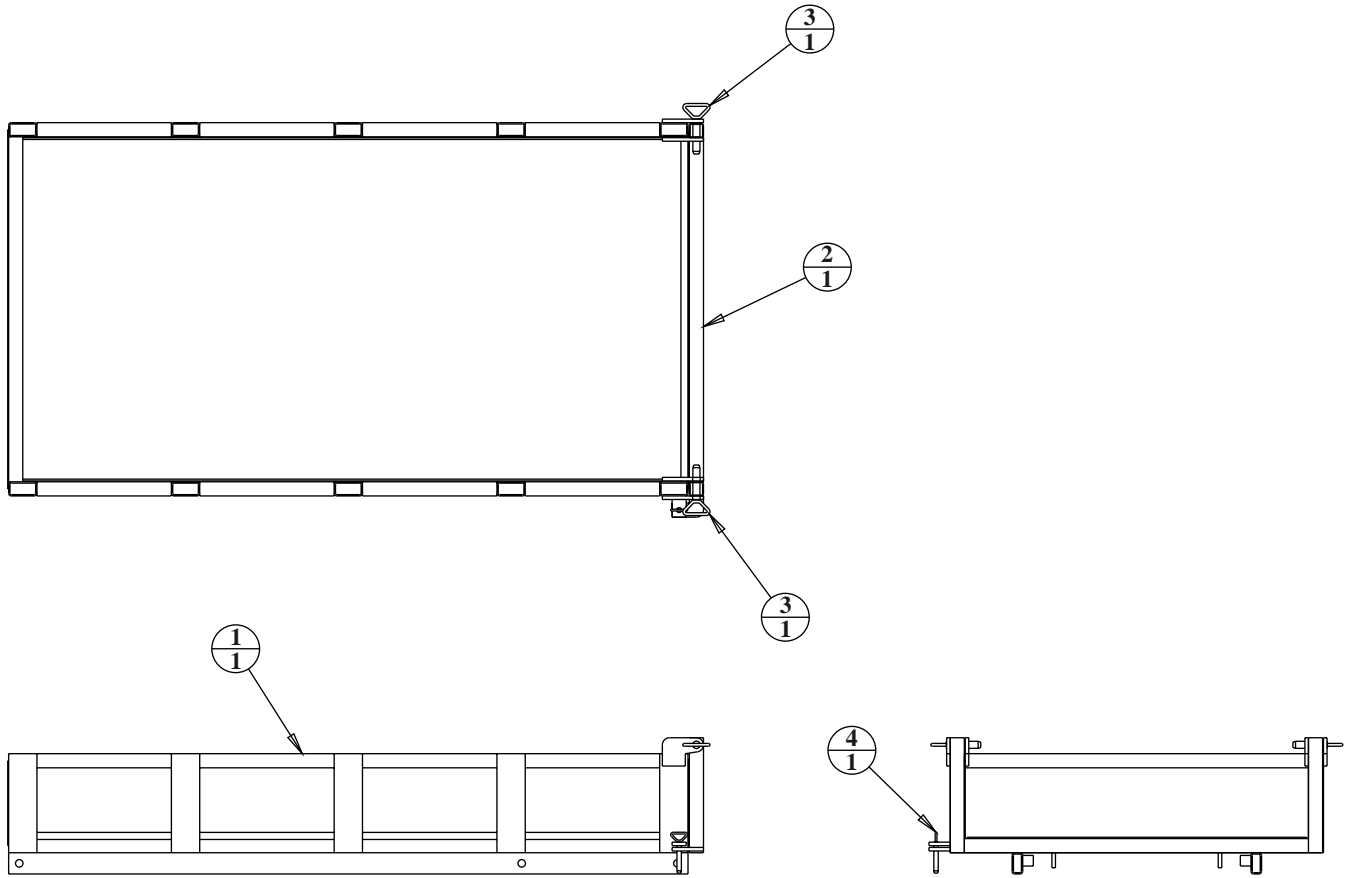
CCA 150



General Wear Parts

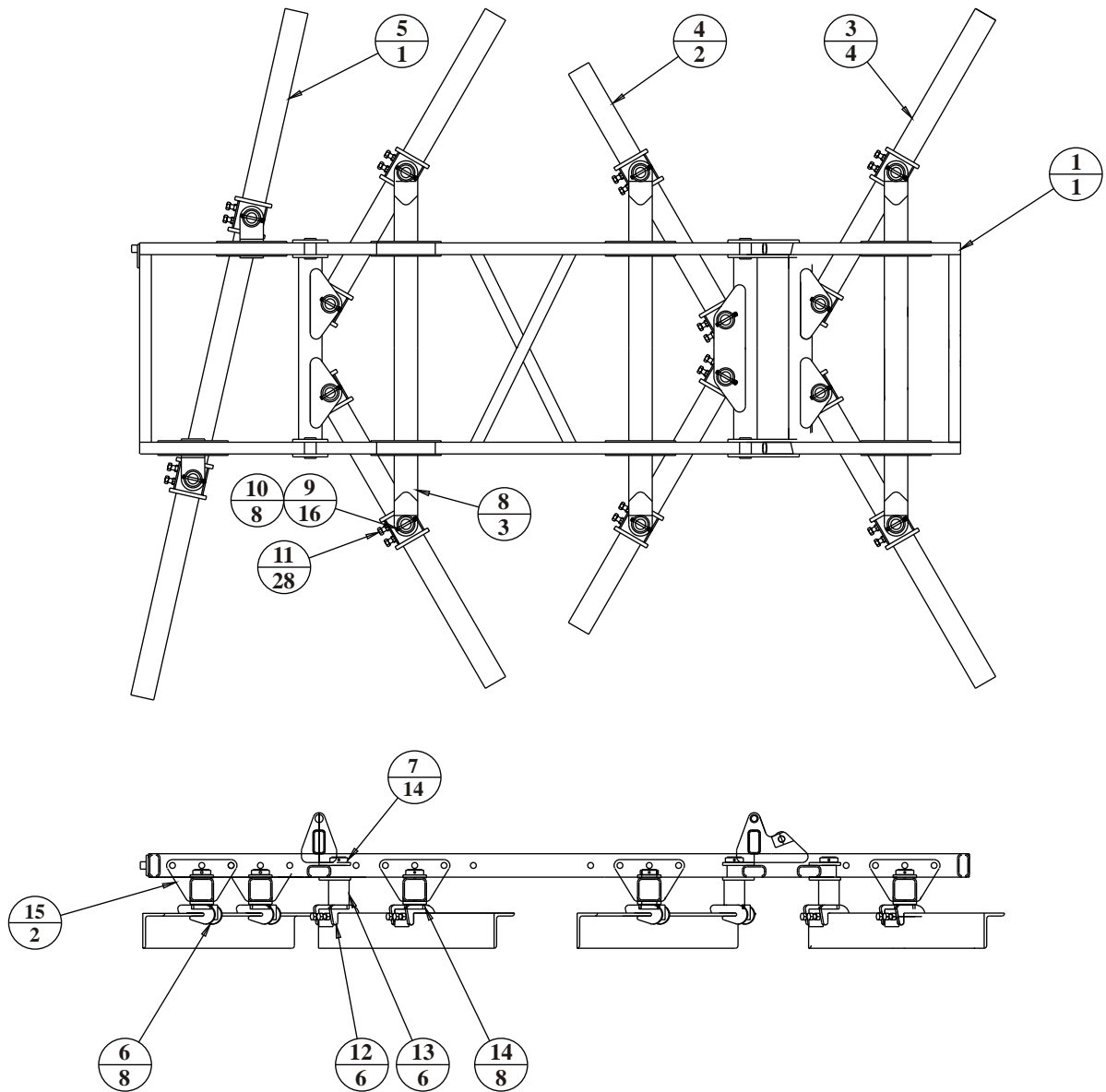
Item	Qty	Part Number	Description
1a	1	GR-0607	Frame Assembly
1b	1	GR-0501A	Frame Assembly
1c	1	GR-0551	Frame Assembly
1d	1	GR-0423A	Frame Assembly
2	1	GR-0005	Wheel Bracket Assembly(R)
3	1	GR-0015	Wheel Bracket Assembly(L)
4	2	Note	Tire/Wheel
5	1	GR-0611	Jack
6	2	GR-0612	Holder Wheel - Top
7	2	B1020-5S	5/8"-11 x 5" Hex Bolt
8	4	N10-5	5/8" Nut
9	1	GR-0445	Lid Assembly
10	1	GR-0448	Lid Assembly
11	4	B0828-5S	1/2"-13 x 7" Hex Bolt
12	8	N08-5	1/2" Nut
13	2	GR-0617	Red Light Kit
14	1	GR-0618	7 Conductor Wire
15	1	GR-0619	Trailer Connector
16	1		License Plate

Dump Box GR-0084



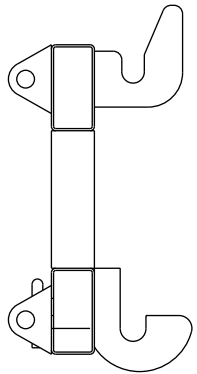
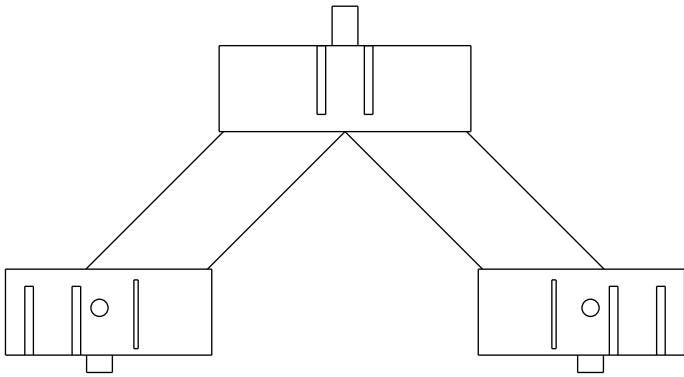
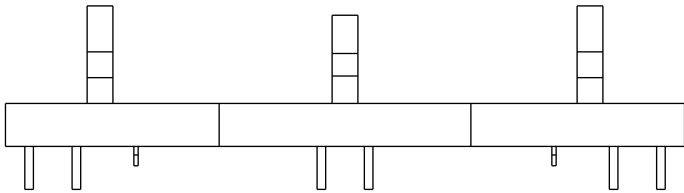
Item	Qty	Part Number	Description
1	1	GR-0085	Dump Bed Assembly
2	1	GR-0140	Tailgate Assembly
3	2	GR-0113	Hitch Pin - 1.00" x 4.5"
4	1	GR-0115	Hitch Pin - 0.625" x 4"

7-Blade Grader Assembly GR-0250

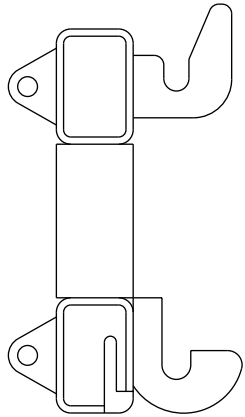
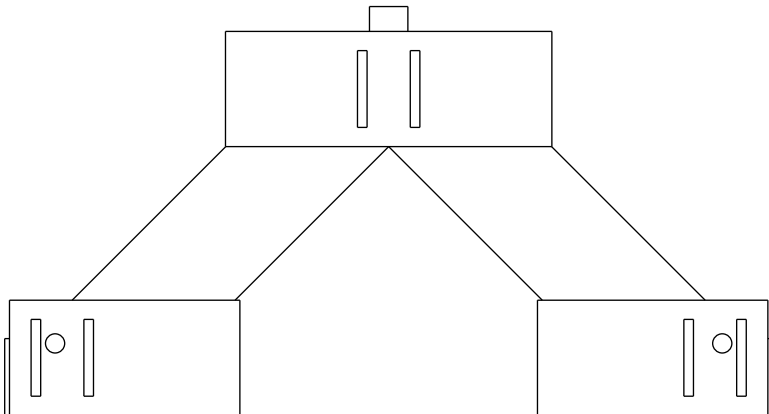
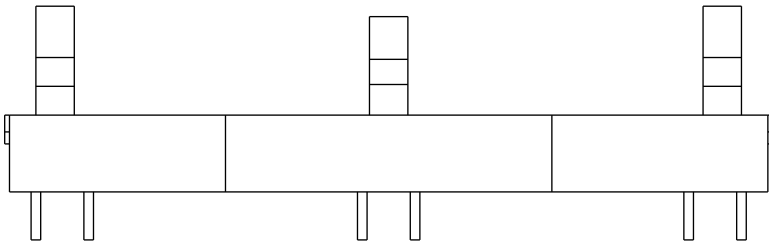


Item	Qty	Part #	Description	Item	Qty	Part #	Description
1	1	GR-0251	Frame Assembly	10	14	B0616-8S	Bolt
3	4	GR-0268	Angle	11	28	1A-0458	Bolt
4	2	GR-0269	Angle	12	6	GR-0285	Bracket Assembly
5	1	GR-0270	Angle	13	6	GR-0287	Tube - Spacer
6	8	GR-0275	Bracket Assembly	14	8	GR-0288	Tube - Spacer
7	14	GR-0276	Collar	15	2	GR-0290	Bracket Assembly
8	3	GR-0280	Beam Assembly				
9	28	N06-8	Nut				

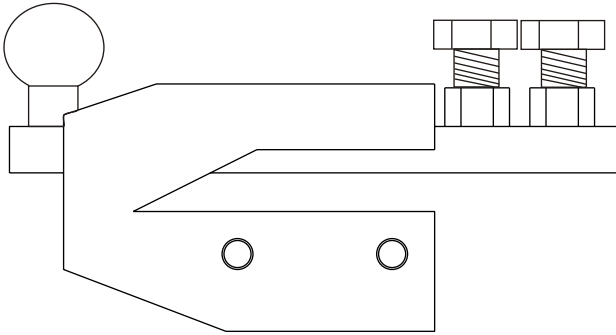
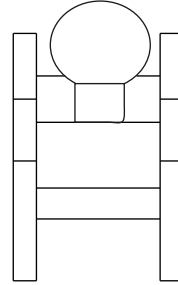
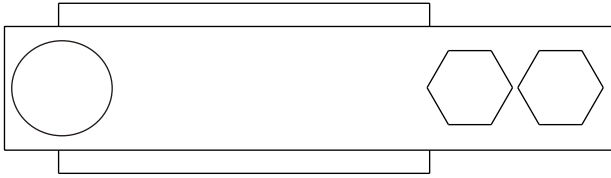
**Category 1
3-point hitch
GR-0450A**



**Category 2
3-point hitch
GR-0401**



Quick-Tach System GR-0127



Additional Options

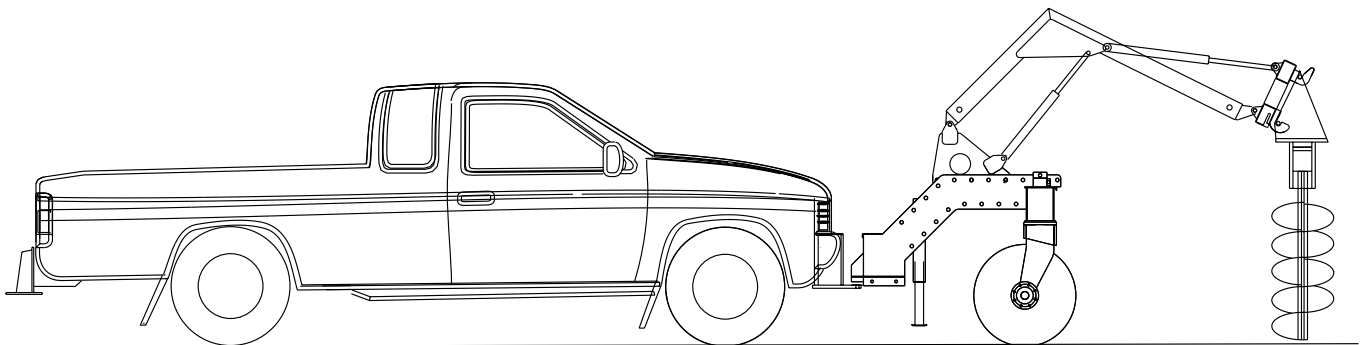
CCA056 12V or 24V Power Unit 1 Gal. 2 Spool
CCA057 8 HP Gas Power Unit 10 Gal. 4 Spool
CCA070 Remote Pendant Control 4 Switches
CCA071 4 Additional Switches
CCA072 Radio Remote Control
CCA073 Hydraulic Circuit Multiplier 4GPM Per Section)
CCA075 CCA 025-150 Toe Bar
CCA076 1500 lb. 12V Winch w/Mount
CCA078 CCA 025-250 Manual Land Gear Single
CCA079 CCA 025-150 Hydraulic Leg Lift
CCA080 6' Blade w/Manual Rotate
CCA081 Hydraulic Rotate Cylinder
CCA082 48" ¼ Cubic Yard Loader Bucket
CCA083 Category 1 3 Point Hitch
CCA084 Loader Arms 60" Lift Height
CCA085 Parallel Loader Arms 60" Lift Height
CCA086 Loader Arms w/3 Point & 48" bucket
CCA087 72" box Scraper
CCA088 1 Cubic Yard Dump Box
CCA089 60" Snow Box
CCA180 8' Blade w/Manual Rotate
CCA181 Hydraulic Rotate Cylinder
CCA082 60" .50 Cubic Yard Loader Bucket
CCA083 Category 1-3 Point Hitch
CCA183 Category 2-3 Point Hitch
CCA283 3 Point Under Frame Arms W/Cylinders
CCA184 Loader Arms 84" Lift Height
CCA185 Parallel Loader Arms 82" Lift Height
CCA186 Loader Arms 112" Lift Height
CCA187 Loader Arms 140" Lift Height
CCA101 84"Loader Arms w/3 Point & 60" bucket
CCA087 8' Box Scraper
CCA188 2 Cubic Yard Dump Box
CCA089 102" Snow Box
CCA279 CCA 200-250 Hydraulic Leg Lift
CCA280 10' Blade w/Hydraulic Rotate
CCA082 60" 1 Cubic Yard Loader Bucket
CCA383 Category 2-3 Point Hitch
CCA483 Category 3-3 Point Hitch
CCA583 3 Point Under Frame Arms W/Cylinders
CCA284 Loader Arms 94" Lift Height
CCA285 Parallel Loader Arms 92" Lift Height
CCA286 Loader Arms 122" Lift Height
CCA287 Loader Arms 150" Lift Height
CCA201 94"Loader Arms w/3 Point & 60" bucket
CCA287 10' Box Scraper
CCA288 3 Cubic Yard Dump Box
CCA089 102" Snow Box

P.W.C.E. Warranty Information

PWCE guarantees the performance of our Construction-Carry-All. The PWCE Construction-Carry-All Warranty covers parts only for a period of one year from date of delivery. This does not include any labor. We are proud to offer such high quality products and services that we stand behind every item we sell.

Paul Wever Construction Equipment is dedicated to product support for the construction industry. We provide owners, operators, and dealers with solutions to their problems. If you have a need for engineering services, new product development, or current product support, please contact us.

Paul Wever Construction Equipment
401 Martin Drive -- P.O. Box 85
Goodfield, IL 61742
1-800-990-7923
www.pwce.com














Notes

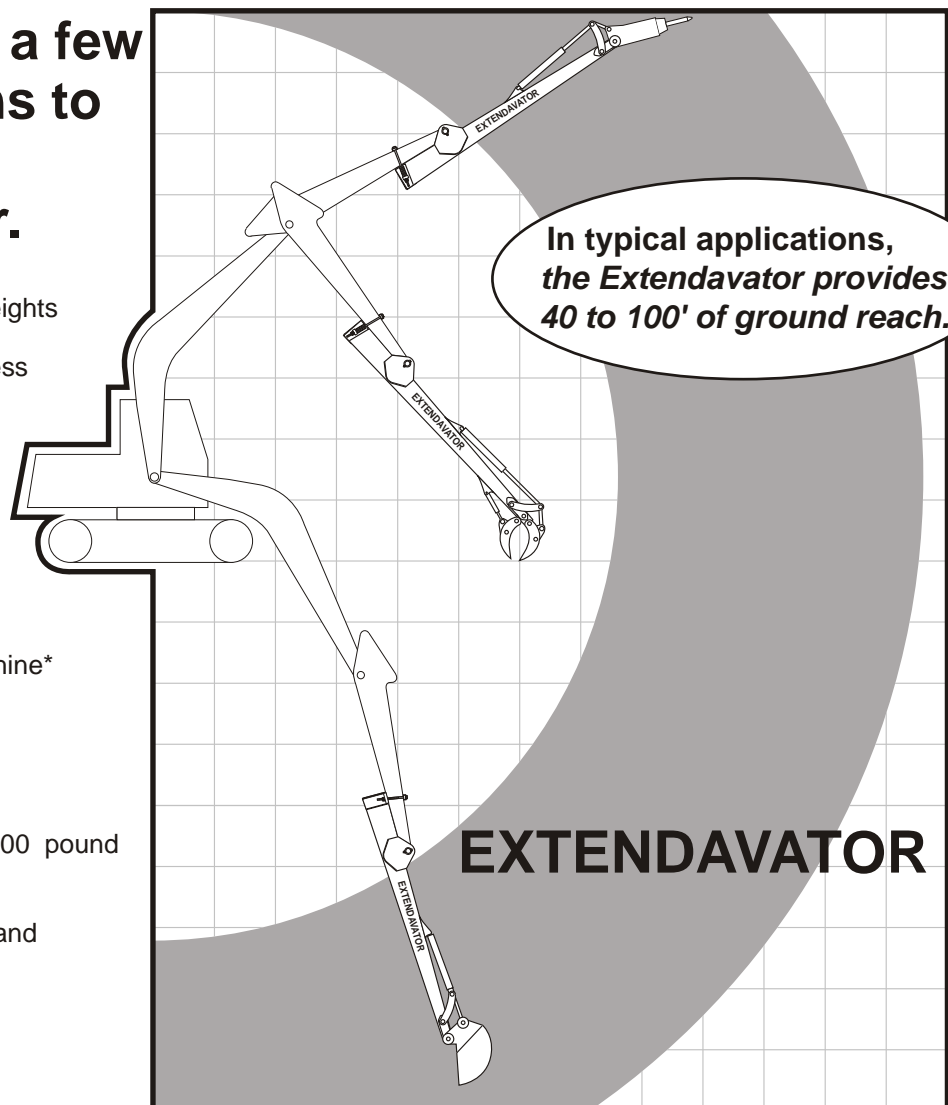
Paul Wever Construction Equipment Engineering Services

Paul Wever Construction Equipment is dedicated to product support for the construction equipment industry. We provide owners, operators, and dealers with solutions to their problems. If you have a need for engineering services, new product development, or current product support, please call us.

Here are just a few of the reasons to purchase an Extendavator.

-  No additional counterweights
-  Installs in two hours or less
-  No additional valves
-  Economical
-  Guaranteed
-  Fits multiple machines*
-  Transports with the machine*
-  No operator retraining
-  Local parts availability
-  Used on 25,000 to 500,000 pound machines
-  Available in many sizes and lengths

* Except 4 to 8 feet



P. W. C. E.
1-800-990-PWCE